

DYNAMIC LIFE CHRISTIAN SCHOOL

HANDBOOK

Fall 2026-2027



1600 John Marshall Highway

Front Royal, VA 22630

(540) 636-9595

www.dlcs1.com

dlcs1@comcast.net

Vision

Dynamic Life Christian School envisions a community where students are taught to love God and one another, recognizing the unique and special nature of each individual as seen through God's eyes. Our vision is to cultivate a nurturing environment that celebrates diversity and encourages personal growth.

We aim to inspire students to become compassionate, thoughtful, and responsible individuals who contribute positively to society. Our vision is rooted in the belief that every child is a precious gift, deserving of love, respect, and the opportunity to reach their full potential.

Through our educational programs, we aspire to develop leaders who are grounded in faith and equipped with the skills needed to navigate the challenges of the future, guided by the principles of love and understanding.

Mission Statement

At Dynamic Life Christian School, our mission is to deliver affordable, high-quality early childhood education within a Christ-centered setting. We are dedicated to nurturing children from ages 1 through 7th Grade, fostering their social, emotional, physical, and academic growth. Through a collaborative partnership with parents and staff, we aim to create a stimulating educational experience that prepares children for a bright future.

We believe in providing an environment where children can thrive, supported by a curriculum that emphasizes Christian values and academic excellence. Our mission is to ensure that every child receives the care and attention they need to succeed.

Our commitment extends beyond academics, as we strive to instill a love for learning and a deep connection to faith, creating a foundation for lifelong success.

School Colors

Black and Gold

School Mascot

Eagle

Church Attendance

Faithful church attendance is important for your child. If a person continually misses church, we believe a void will exist that is not being filled. Therefore, we would like to see that all of our students go to church regularly at the place where God has directed your family to attend.

If your family is not currently attending a local church regularly, we invite you to visit us at ***Dynamic Life Praise and Worship Center***. We are a family oriented ministry that places just as much emphasis on children as we do adults. We offer services on Friday Nights at 7:00 p.m. and Family Worship Service on Sunday mornings at 10:00 a.m.. Childcare and children's ministry is available at the Sunday service at 10:00 a.m. For more information about our church, you can visit us at www.dynamiclifeministries.com or call 540-636-9595.

Admissions

Admission to DLCS is a privilege and is based on availability of space in the given class. In order to secure a place for your child at DLCS, all fees and paperwork must be submitted to our registration staff. Once classes have reached their limit, your name will be placed on a waiting list and you will be notified if there is an opening.

Your child may begin attending Dynamic Life Christian School once they reach age 1. All other children will be placed in the appropriate class, based on age as of September 30, 2026.

Our Programs

NURSERY - age 0-1

At Dynamic Life Christian School, our nursery program is more than just childcare; it's a partnership with parents in cultivating a safe and nurturing Christian environment for their little ones. Our dedicated staff understands the critical importance of early childhood development, and we strive to introduce children to the love of God from the very beginning. As young minds readily absorb everything around them, our caring team ensures they are surrounded by positive influences and Christian values, laying a strong foundation for their spiritual and intellectual growth. We believe that by working hand-in-hand with parents, we can provide the best possible start for each child's journey of faith and learning.

PRESCHOOL - ages 2-4

At Dynamic Life Christian School, our preschool program for ages 2-4 is designed to be a cornerstone in a child's educational and spiritual journey. We understand the crucial role these formative years play in a child's development, which is why we prioritize creating a safe and nurturing Christian environment. Our dedicated staff fosters a love for learning and a deepening understanding of God's love through age-appropriate activities and curriculum. From exploring the wonders of creation to learning foundational social and academic skills, our preschoolers are guided by caring educators who recognize the importance of instilling Christian values early on. Together with parents, we aim to shape confident and compassionate individuals who are equipped to thrive academically, socially, and spiritually.

ELEMENTARY - Kindergarten thru 7th Grade

At Dynamic Life Christian School, our elementary classes provide a foundation rooted in both academic excellence and Christian values. Combining the renowned Abeka curriculum with small class sizes, we equip students, teachers, and parents with resources that integrate Biblical principles into every aspect of learning. From mathematics to language arts, each lesson is carefully crafted to instill values of integrity, diligence, and compassion. Our dedicated educators guide students through a rigorous academic program while nurturing their spiritual growth and understanding of God's Word. By immersing students in a curriculum that emphasizes Christian values, we empower them to navigate the complexities of the world with wisdom and faith, preparing them to be confident and compassionate leaders in their communities.

We're excited to announce that starting this year, we'll be introducing 7th-grade classes. Abeka is renowned for its high-quality educational content; paired with our dedicated teaching staff who will provide oversight for all subjects. We're committed to providing a dynamic educational experience that prepares students for success, and we believe that our 7th-grade program will offer a valuable opportunity for growth and achievement of each student enrolled.

Attendance and Tardies

Our Elementary School classes begin promptly at 8:45 am. In order to ensure continuous progress in school, regular attendance and habits of punctuality are essential. Our curriculum is designed to fill the entire day, and it is important that your child arrives at school on time. A student who is tardy should report to the school office to receive a Tardy Slip.

Please note: Students that are tardy are subject to disciplinary actions from his or her teacher as well as school administration. A student who arrives late with an excused reason (i.e. doctor note or dentist note), albeit excused, is still considered tardy. A student who is tardy due to unexcused reasons is subject to appropriate disciplinary action as listed below.

4 days of unexcused tardiness in a quarter will be equivalent to one absence.

8 days of unexcused tardiness in a quarter will be equivalent to two absences.

Excessive Absenteeism can result in a child not being promoted to the next grade level.

Our Elementary School classes end at 3:15 pm. Pickup prior to 3:15 pm will be considered an early release for Elementary Students.

Due to fixed costs averaged over the entire year, there is no reduction in tuition for sick days, family vacations, personal days off, weather closings, or other days off as listed in the school calendar. Weekly tuition charges are based on our total operating costs for the school year divided by the number of weeks in that school year. Consequently, there will be NO reduction in contracted weekly tuition amounts due. The full tuition will be charged. This applies even when there are fewer than five days of classes or students are absent on scheduled days.

Fees and Tuition

Fees for enrollment (registration fee, book fee, and supply fee) are non-refundable. First week's tuition and enrollment fees are expected at the time of enrollment.

Tuition is due each Friday for the week to come. If payment is made after 12:00 noon Monday, a late fee of \$25.00 will be placed on your account. A 10% discount is available for all tuition costs paid annually for the entire contracted term.

Due to fixed costs averaged over the entire year, there is no reduction in tuition for sick days, family vacations, school closures, personal days off, weather closings, or other days off as listed in the school calendar. Weekly tuition charges are based on our total operating costs for the school year divided by the number of weeks in that school year. Consequently, there will be **NO** reduction in contracted weekly tuition amounts due. The full tuition will be charged. **This applies even when there are fewer than five days of classes or students are absent on scheduled days.**

If an account balance is more than one week past due, students **will not be permitted to attend school** until the account is settled. The balance may be from meals, before or aftercare or potty charges, not just tuition.

All payments will be made through Tuition Express. If more than two payments are declined, a penalty will be charged and immediate arrangements will be made by parent for keeping the account current.

DLCS provides multiple ways in which payments can be made using Tuition Express:

- Make payments online from home on your computer
- Set up automatic drafting
- Access Tuition Express website through your phone to make a payment
- Call in a credit card payment to the school office in case of online technical errors

LATE FEES will be billed if payment is not posted in the system no later than Monday by 12:00 p.m. Because DLCS provides a number of convenient ways to make your payments, late fees will not be waived.

Students enrolled on a less-than-five-day-a-week contract can "make up" lost days on a space-available basis. Make up days must be pre-arranged and used either **one week before** or **one week after** the lost day(s).

Re-Enrollment

In the spring, you will have the opportunity to re-enroll your child at Dynamic Life Christian School for the following school year before enrollment opens to the general public.

Withdrawal/Dismissal

Our enrollment agreement is a **CONTRACT** between parents/guardians and DLCS. DLCS commits to operating expenses for the school year based on enrollment. Therefore, students may not be withdrawn before the final session day unless released by the Director.

Withdrawal from the school must be made in writing, through the Director's Office, at least one week prior to withdrawal. The request for withdrawal will be documented in the student's permanent record. All accounts must be paid in full before transcripts, report cards, and/or books can be released.

Students who withdraw voluntarily or through expulsion, are responsible to pay a \$500 withdrawal fee per student. Application, registration, and curriculum fees are non-refundable.

Arrival and Departure Information

To support student safety, campus security, and consistent classroom routines, all families are required to follow the drop-off and pick-up procedures outlined below. These procedures are part of the school's overall security plan and help ensure an orderly start and end to each school day.

All individuals entering school grounds are expected to drive slowly and remain attentive to children who may be walking, playing, or being dismissed. Handicapped parking spaces are available at both the upper and lower level entrances and may be used only by vehicles displaying a valid handicapped placard. All other families should utilize unmarked parking spaces.

Before Care Drop-off for children ages 2 and up begins at 7:15 a.m., and nursery (ages 1–2) drop-off begins at 8:00 a.m. Standard classroom drop-off for elementary classes takes place between 8:30 and 9:00 a.m. and preschool classes takes place between 8:45 and 9:15 a.m. Any arrival outside of this window must use the intercom located at the front entrance before entering the building.

For security purposes, all student drop-offs take place in the foyer area. Parents are not permitted to drop children off directly in classrooms. Any parent wishing to visit a classroom at any time, including during drop-off, must first check in with office staff before leaving the foyer area. This procedure applies consistently throughout the school day and is an important part of maintaining a secure campus.

During curbside drop-off, parents may briefly exit their vehicle to assist with unloading their child; however, they must remain with their vehicle at all times. If a parent needs to enter the building for any reason, the vehicle must be parked prior to entering.

Daily dismissal occurs between 3:00 and 3:30 p.m. Families may line up in advance; however, staffing for the pick-up line does not begin until 3:00 p.m., and children will not be released through the line before that time. During dismissal, children ages 1–2 are picked up upstairs, and children ages 3 and up are picked up downstairs.

Parents utilizing the pick-up line are required to clearly display their assigned car number in their vehicle window. If a car number is not visible, the parent will be asked to park and report to the office and present a valid photo ID before the student is released.

All pick-ups prior to 3:00 p.m. require parents to park and come into the office. Students will not be released early through the pick-up line. Classrooms, including preschool classes, remain actively engaged in instructional activities and daily routines such as table checks, cubby cleaning, and classroom transitions throughout the day. For this reason, early pick-ups should be limited whenever possible. Families needing to pick up a child outside of the 3:00–3:30 p.m. dismissal window must use the intercom at the upper entrance.

Parents are encouraged to notify the office in advance when early dismissal is necessary to allow adequate time for student preparation.

After school care is available until 5:30 p.m. Late fees begin at 5:40 p.m. and are assessed at a rate of \$5.00 per child for each ten-minute increment. Each additional ten-minute period late will result in an additional fee. Repeated late pick-ups may result in dismissal from the after school care program.

Food Service

Dynamic Life Christian School offers hot lunches, snacks, and drinks. Our spacious, commercial kitchen has been inspected and approved by the Department of Health. Our staff follows strict cooking and serving guidelines. We offer a well-balanced, nutritious plan to our students.

A packed lunch can include an item for heating. The item that requires heating must come in a separate container in which it can be heated and served.

Upon arrival in the morning, you will need to indicate to the drop off staff member whether your child will be buying lunch and/or snack.

All meals and snacks will be billed to your account at the end of the week. If your child does not bring lunch or snack, one will be provided and your account will be charged.

Lunch \$6.00
Snack \$3.00

Your child is allowed to bring snacks to share when celebrating special occasions, however these must be store bought with ingredients printed on packaging.

Supply List

You will need to send the following items to school with your child to begin the year:

- All ages: One change of clothes (placed in a labeled bag)
- Full-sized backpack
- Age 2: Three-fold resting mat if napping (small blanket and/or pillow is permitted)
- Ages 3-4: Nap blanket and small pillow
- Play shoes (must have shoes appropriate for outdoor play)
- Children who are not potty trained will need one pack of diapers and wipes per week

Please label all of your child's belongings. Dynamic Life Christian School is not responsible for lost items. All other school supplies are covered in the supply fee which is paid at registration.

Cell Phone and Smart Watches

Cell phones, smart watches, fitbits, or airpods are not permitted at school. Students may keep a cell phone in their backpack or locker for use after school. Any students found with these devices during school hours will receive a consequence. The devices will be taken to the office and held until the end of the day for parent pick up.

Snow Days and Emergency Closings

For emergency announcements regarding snow days and late openings, visit our facebook page at [www.facebook.com\dynamiclifechristianschool](https://www.facebook.com/dynamiclifechristianschool). We will also send out emails and Procure messages to all families who have signed up for Procure communication. This is our main source of parent communication and should be monitored for updates during possible closures. **Reminder: There is no adjustment to weekly tuition for snow days, weather delays, unforeseen circumstances, or emergency closings.**

Delays

On days that the school experiences an emergency delay, classroom doors will not be opened until a specified time. Early arriving parents may remain with students in their car until staff is ready to begin classes. Kindergarten thru 7th grade students will be considered tardy if they arrive fifteen or more minutes after opening begins.

Field Trips

Fields trips are designed to encourage learning through fostering a "hands on" approach. Students must return signed permission slips to the office by the designated due date in order to participate. Additional field trip fees may apply.

Transportation will be provided by an approved, appropriately licensed driver. One year old and two year old students require a car seat. Parents are welcome to accompany their child on field trips. Parents of one and two year olds are strongly encouraged to attend. In order to ensure the safety of all students and staff, as well as provide a fun, enjoyable trip, all students are expected to be well-behaved while on field trips. If a student demonstrates they will be unable to behave on a trip, the parents will be contacted to make other arrangements.

Health Information

Illness spreads from child to child very quickly. Students with fevers, contagious or infectious diseases or symptoms will be sent home promptly and excluded from school activities.

DLCS does not provide child care for students with fevers or other symptoms. It is the parents' /guardians' responsibility to arrange for PROMPT PICKUP, within 30 minutes, of a student deemed too sick to remain in school. If a child is not picked up within 30 minutes of initial contact, Dynamic Life Christian School may impose an additional charge to the account to cover the one on one care provided.

Children should not come to school if they have had a fever of 100 degrees or above. Once the child is confirmed to return to school by a healthcare provider or does not have a fever of 100 degrees or above without the use of fever-reducing medicine in the last 24 hours, they are able to return to school. Children are not permitted to attend school if they have vomited or had diarrhea within the last 24 hours or may have an illness which is contagious. If your child has two or more flu like symptoms such as runny nose, fever, flu, cough, sore throat, body aches, congestion, extreme fatigue, or any behavior that is unusual for your child and may indicate illness, they cannot be brought to school unless a note is on file from a medical provider that has determined the child is not contagious. A doctor's note can remain on file for a child so long as no additional symptoms occur. If symptoms clear up for 72 hours and restart again, a new doctor's note will be required to ensure the child is not contagious. If there is a fever present, the child must be fever free for a 24 hour period without the aid of a fever reducing medication.

Children with bacterial/viral pink eye are not permitted to attend school until the condition has been treated. Please contact the school if your child has either of these. They must have a doctor's note stating that they have been treated before they can return to school. Children with head lice nits are not permitted to attend school until three days after treatment has begun. Upon returning to school after treatment, school staff will perform a head check to determine if the child can return to class.

Daily Health checks are conducted by trained staff throughout the day to ensure the health and safety of our staff and students. If a child becomes sick while at school, they will be isolated and a parent will be notified to pick up the child. This will be done automatically if your child has a fever or if there is pain that has resulted from an injury. If both parents are unavailable, please have a relative, neighbor, or friend to care for your child. The name of this designated person must be written on your child's emergency information form. Teachers and office staff cannot take the responsibility of caring for a sick child.

Immunizations

At the time of admission, your child must provide up to date and accurate immunization records. The following Department of Health required immunizations and dates of administration must be met prior to the student entering Kindergarten:

- *Series of 4 DTAP doses with one on or after 4th birthday
- *Series of 4 POLIO doses with one on or after 4th birthday
- *2 doses of Measles, Mumps, Rubella (MMR)
- *Series of 3 Hepatitis B doses
- *Series of 2 Hepatitis A doses
- *Series of 2 VARICELLA doses
- *Series of 2-4 HibB doses depending on the age of first dose
- *Series of 2 HPV doses with one before entering 7th grade

If a family chooses not to immunize their child because of religious, personal, or medical reasons, the family must submit a Commonwealth of Virginia Exemption Certificate in lieu of the immunization record.

Medication

All prescription and over the counter medication must be brought to the office and can be administered only by trained staff once the proper forms have been completed. Medication can only be administered with correctly completed proper forms. Once forms are completed, bring medication in it's original package, labeled with the child's name, to the office to be stored. **DO NOT put medication in a backpack, lunch bag, or leave with child.**

Physicals

Physical exams are required for entrance into Kindergarten and new enrollment into Elementary Classes.

Prevention of Child Abuse

Parents and guardians have the primary responsibility for the health and well-being of their child. School health services supplement, rather than substitute, for parental care and concern for the health of the students.

Virginia law imposes upon school personnel the legal responsibility of reporting to the local child protective services agency any incident of suspected child abuse or neglect.

School personnel who suspect the abuse or neglect of a student must report the matter directly to Child Protective Services and to the School Administrator. At that point, confidentiality must be respected.

According to the *Code of Virginia*, (section 63.2-1518) *Authority To Talk to a Child or Sibling*, "Any person required to make a report or conduct an investigation or family assessment, pursuant to this chapter may talk to any child suspected of being abused or neglected or to any of his/her siblings without consent of and outside presence of his or her parent, guardian, legal custodian, other person standing in, or school personnel."

Dress and Grooming Codes

The following dress code at DLCS is to be observed each day during the school year, for all school programs, and field trips; unless the school has informed parents otherwise. (e.g. special dress up days)

Dynamic Life Christian School reserves the right to make the final decision in questionable areas of dress code. Parents may be called to bring appropriate clothing when students do not follow the dress code.

PRE-SCHOOL CLASSES

We do not require uniforms for our preschool students, however, we ask that all students be well groomed and dress neatly and modestly. Clothes are to be wrinkle free, neat, and clean. Items should not be frayed, tattered, or have holes in them. Girls are not to wear clothes designed for boys and boys are not to wear clothes designed for girls. We ask that students do not wear clothing that may be scary or contain images or characters that are not appropriate for a Christian environment. (e.g. vampires, witches, skulls, zombies). Girls should wear shorts under skirts/dresses. Boys are not permitted to wear earrings. Children must have a pair of tennis shoes in their classroom that they can change into in order to participate in our daily recess.

Hair must be neatly trimmed and groomed. For boys, conservative, traditional, and neat haircuts are acceptable. Except on designated dress-up days, such as Crazy Hair Day or 100th day of school, only natural hair coloring is allowed. We do not permit extreme hair styles or colors such as pink, blue, green, unnatural red, etc. Makeup is only permitted to be worn by girls and must be kept minimal. Makeup that is excessive or distracting will not be permitted.

ELEMENTARY CLASSES - Kindergarten thru 7th grade

All shirts must be ONE solid color or heathered. NO accent colors or striping. No pictures or words are allowed, except the DLM or DLCS logo, which is optional. Shirts must be collared, polo style, turtleneck, mock turtleneck, short sleeved or long sleeved. Brand logos are only acceptable if smaller than a quarter. **Sleeveless and plain t-shirts are not permitted.**

Pants for both boys and girls must be Khaki style, twill or corduroy fabric in tan, black, or navy colors only. Dress capris, skirts, jumpers, and dresses are permitted for girls only and must have a collar or collared shirt under them. These also must be in tan, black, or navy colors only. Leggings with patterns or colors may be worn only if under dresses and skirts.

Children must have a pair of tennis shoes in their classroom that they can change into in order to participate in our daily recess.

All clothing must be free of holes, patches, frays, chains, or other embellishments.

Boys hair length on the sides may not be any longer than half way down the ear, the back of the hair is not permitted to surpass the top of the collar, and the front of the hair is not to be below the top of the eyebrows. Boys are not permitted to wear earrings.

Girls hair must be neatly trimmed and groomed. We do not permit extreme hair styles or colors such as pink, blue, green, unnatural red, etc. Makeup is only permitted to be worn by girls and must be kept minimal. Makeup that is excessive or distracting will not be permitted.

Dress down days will be scheduled and announced. Clothing must be clean, modest, and appropriate for a Christian environment. Jeans, sweatpants, leggings paired with finger tip length skirts, hoodies, dresses, and skirts are permitted. Shirts may not have inappropriate pictures or writings.

Report Cards

Elementary students will receive a report card every nine weeks. Interim reports will precede the report card halfway through the quarter. **All accounts must be up to date in order for students to receive their report card.**

October 21: End of 1st quarter

January 15: End of 2nd quarter

April 1: End of 3rd quarter

June 3: End of 4th quarter

Interim reports: September 17, November 30, February 18, May 4

Report cards and Awards Assemblies: October 30, January 22, April 9, June 3

Parent-Teacher Communication

Teachers are expected to be reasonably available to parents/guardians throughout the school year to keep the lines of communication open in the best interest of the students. Parent-Teacher conferences are recommended certain times of the year, but can also be scheduled throughout the year, if necessary. Dynamic Life Christian School uses a service called PROCARE PARENT PORTAL for daily communication with parents regarding class room activities, behaviors, and upcoming events. This app can also be used to communicate with the teachers directly as well as to share pictures or student information. Parents/guardians are expected to keep contact information updated in the office.

Parents must provide the school with at least one form of emergency contact which the parent or emergency contact person can be reached during school hours in the event of illness or emergency.

Harmony and Unity

God is pleased when we dwell together in harmony. Therefore, Dynamic Life Christian School adheres to the principles set forth in Matthew 18 regarding relationships and communication. The Matthew 18 principle states that if one has been offended or has a concern of any kind, he should go immediately to the person involved and discuss the matter in love. The goal is to have relationships restored and strengthened for the honor of God.

DLCS is in partnership with parents as an extension of the Christian home. It is the desire of DLCS to apply Christian based education to guide students in developing and maintaining peaceful relationships inside and outside the classroom. We model positive conflict resolution through Christ-like communication and problem solving.

We have a strict policy at Dynamic Life Praise and Worship Center that we adhere to at DLCS: ***"No division, no dissension, and no discord will ever rule in this house."***

Student Conduct

We believe our students have the ability to know God, walk with Him, make good choices, and demonstrate Christian character. Our students can and do make a positive impact on their world. Children are a blessing from the Lord and deserve our best efforts for their nurture and their education.

Students have a responsibility as well. We expect that the students, while remaining "children," will demonstrate good behavior. Our teachers will encourage students to "get along" with each other and will work with them to resolve conflicts according to Biblical standards.

If a student is diagnosed with a learning disability that cannot be managed in a regular classroom or setting, by the advice of a physician or a licensed clinical psychiatrist, parent/guardian will be given the option of canceling the contract, or fully providing all necessary funds to educate the child (e.g. tutor, classroom aide, materials, etc.). This amount will be determined on an individual basis and presented by school administration to the contract holder.

DLCS staff, faculty, and administration have partnered with parents to provide an environment that is conducive to Christ-centered education. We pledge to our parents to do our very best to provide an atmosphere of learning and one that promotes strong Christian character and development.

Discipline

Discipline at Dynamic Life Christian School is a reflection of our love for our students and our desire to see them grow in self-control, character, and responsibility. We view discipline as a genuine act of care and guidance, rooted in Biblical principles and a commitment to helping each child succeed. Scripture reminds us that God honors willingness and obedience (Isaiah 1:19), and we seek to encourage these qualities through positive reinforcement, consistency, and grace.

All students are expected to conduct themselves in a manner that supports a safe, respectful, and orderly learning environment. Expectations for behavior are developmentally appropriate, and age-related differences in social and emotional growth are understood and taken into consideration. The primary objective of any disciplinary action is to teach self-control and self-discipline while preserving the dignity of the child and the integrity of the classroom.

Discipline is typically handled by the classroom teacher using standards that are clearly communicated to students. Positive reinforcement and encouragement are emphasized as the primary tools for behavior guidance. When additional correction is needed, appropriate measures may include redirection, loss of a privilege, time away from an activity, or other age-appropriate consequences selected to promote reflection and growth rather than resentment.

During the school day, preschool students who require extra attention will be given multiple opportunities to redirect their behavior and “turn their day around.” We recognize that young children are in different stages of social and emotional development and may need additional guidance as they learn to function within a group setting.

When a student demonstrates ongoing behavioral challenges or has identified special needs, these situations are addressed on an individual basis. Dynamic Life Christian School is committed to partnering with parents, teachers, administrators, and, when appropriate, outside resources to support the child’s success. Open communication is a priority, and behavioral concerns, interventions, and next steps will be clearly documented and discussed so that families are not caught off guard by disciplinary decisions.

DLCS does not provide therapeutic or clinical services. When additional support is recommended, the school may collaborate with families and the county to help facilitate access to appropriate services. These services often occur during the school day and may require parent transportation. DLCS is not responsible for transporting students to or from outside therapy or support services. Participation in outside services is intended to support the child but does not guarantee continued enrollment.

As part of this partnership, families are expected to reasonably consider and participate in recommendations made by DLCS staff or administration that are intended to support the child’s ability to function successfully within the classroom environment. Parents are also encouraged to share strategies that have been effective for their child; however, all proposed strategies must be appropriate and feasible within a group classroom setting. When meaningful collaboration or follow-through is not possible, or when a child’s needs consistently exceed what can reasonably be supported, the school may determine that DLCS is not the best placement for the child at that time.

If, after reasonable attempts at redirection, a preschool student is unable to regain appropriate behavior, the parent or guardian will be contacted and required to pick up the child **within 30 minutes** of notification. Dynamic Life Christian School does not have one-on-one therapeutic staff available to manage severe or ongoing behavioral needs.

If a child is sent home due to behavioral concerns on **three separate occasions**, DLCS administration may determine that a one-on-one aide is required in order for the child to continue in the program. Any required aide must be funded by the family and would be an additional cost beyond tuition. Parent-provided aides must be appropriately licensed and approved by the school board. If a family chooses not to provide a required aide, the child may be dismissed from the program.

For elementary students, additional disciplinary measures may include lunch detention, in-school suspension, and/or behavior contracts. These interventions are intended to provide structure, accountability, and support while helping students develop responsibility and appropriate decision-making skills.

Dynamic Life Christian School values families who are willing to work in partnership to support their child through challenges. While every effort is made to accommodate and assist students, **DLCS reserves the right to determine appropriate placement or to deny or discontinue enrollment** when it is determined that the school is unable to meet a student's needs while maintaining a safe and effective learning environment for all.

Security

We currently have a security monitoring system, which includes cameras, throughout our building and grounds. We have Fire Marshal-approved fire alarm and emergency evacuation plans. We routinely drill according to the specifications in the evacuation plans recommended by the Fire Marshal. We permit access into our building through only one location, the upstairs foyer area.

The teachers and staff at Dynamic Life Christian School are committed to providing safety and security for all students. We pray regularly for the safety of our school. We recognize that having God's hand of protection on our school is the greatest asset in our safety plan.

One outstanding quality of our teachers and staff is alertness. Our teachers and staff maintain a constant state of alertness while in the classroom and as they move throughout our facility. They care very much about the well-being of each student. Their attentiveness is valuable and essential while caring for young children.

To provide maximum security for our students and staff, we limit access of our building to **staff and students only**. The door at the top of the stairwell remains locked. All visitors are screened at the front entrance before being permitted access to our building.

Safety and security are a major priority at Dynamic Life Christian School. The systems, practices, and plans mentioned above provide an excellent foundation for safety in our building. We routinely consult with experts in order to obtain their advice and suggestions on enhancing security in our building.

Student Records

In cases that involve custody or other court orders, the parent or guardian is solely responsible to provide appropriate documentation and update us with any changes.

DLCS reserves the right to change its policies at any time, with or without notice.

2026-2027 School Calendar

August 10-14: No Childcare or School – Teacher Workday
August 17: Back to School Day (times to be determined)
August 18: First day of School
September 7: Labor Day School Closed
October 12: Teacher Workday School Closed - Parent Conferences
October 21: End of 1st Quarter
October 30: Awards Assembly Elementary
October 30: Fall Fun Day
November 11: Veterans Day School Closed
November 23: Teacher Workday
November 23-27: Thanksgiving Break
December 18: Christmas Lunch – Early Release, No Aftercare
December 21: Teacher Workday
December 21 - January 1: Christmas Break
January 14: End of 2nd Quarter
January 22: Awards Assembly All Ages
January 18: Teacher Workday School Closed
February 15: Teacher Workday School Closed
April 1: End of 3rd Quarter
April 9: Awards Assembly Elementary
March 21: Resurrection Concert 10:00 am
March 22: Teacher Workday School Closed – Parent Conferences
March 22-March 29: Spring Break**
March 30: End of 3rd Quarter
May 3: Teacher Workday School Closed
May 24: Memorial Day School Closed
June 3: Last day of School - Early Release
June 3: Graduation Ceremony

Notes:

**In the event of multiple missed days due to inclement weather, school may be open on these days.

DYNAMIC LIFE CHRISTIAN SCHOOL
1600 John Marshall Highway
Front Royal, VA 22630

August 18, 2026 - June 3, 2027

Non-refundable fees due upon registration:

These fees are paid annually at the beginning of each new school year, and must be paid to secure your child's enrollment at Dynamic Life Christian School

Separate fees apply for Summer Adventure.

New Student Registration fee all classes.....	\$100.00
Re - Registration fee all classes.....	\$50.00
Supply and Curriculum fee for 1 year old, 2 year old, and 3 year old classes.....	\$400.00
Supply fee for Pre K and Kindergarten.	\$400.00
Curriculum fee for Pre K and Kindergarten.	\$250.00
Supply fee for 1st through 7th grade.	\$250.00
Curriculum fee for 1st through 7th grade.	\$500.00
Elective fee for 1st through 7th grade.....	\$250.00

(Above stated fees are non-refundable)

Tuition:

Nursery - 8:15 a.m. - 3:45 p.m.

5 days a week \$280.00 wk

2 year old Preschool - 9:00 a.m. - 3:00 p.m.

2 days a week (T/Th only) \$107.00 wk

3 days a week (M/W/F only) \$149.00 wk

5 days a week \$188.00 wk

Preschool ages 3 and 4 year olds - 9:00 a.m. - 3:00 p.m.

2 days a week (T/Th only) \$100.00 wk

3 days a week (M/W/F only) \$135.00 wk

5 days a week \$171.00 wk

Additional Charges for ages 3 and 4:

Potty Training Fee (*if not completely potty trained*)\$5.00/day

Elementary - 5 days a week, 8:45 a.m. - 3:15 p.m.

Kindergarten thru 7th \$179.00 wk \$7160 yr

DLCS Before and After Care - starts at 7:30 a.m., ends at 5:30 p.m.

2 days a week.....\$44.00

3 days a week.\$63.00

5 days a week.\$80.00

Late charges will apply if children are not picked up at their scheduled time. The charge is \$5.00 for every ten minute increment.

Tuition is due each Friday for the week to come. If payment is made after 12:00 pm Monday, a late fee of \$25.00 will be placed on your account. Due to fixed costs averaged over the entire year, there is no reduction in tuition for sick days, family vacations, or other days off as listed in the school calendar.

Optional Meal Plan:

Lunch.....	\$6.00
Snack.....	\$3.00

ENROLLMENT APPLICATION

Dynamic Life Christian School

Start Date _____

End Date _____

For School Year _____ - _____

 New Enrollment

Student's Name _____

Mailing Address _____
Last First Middle Called by

Street City State ZIP

Home Phone () Sex Birthdate Race: White African-American Asian Hispanic Native American Other

Potty Trained?

yes no

Father's Name _____

Mother's Name _____

Father's Physical Address _____

Street City State ZIP

Mother's Physical Address _____

Street City State ZIP

Father's Work Phone () Father's Cell Phone ()

Father's cell phone service provider: _____

Father's Employer (Company Name) _____

Father's Work Address _____

Street City State ZIP

E-mail Address _____

Mother's Work Phone () Mother's Cell Phone ()

Mother's cell phone service provider: _____

Mother's Employer (Company Name) _____

Mother's Work Address _____

Street City State ZIP

E-mail Address _____

If parents are separated or divorced, with whom does the student live? _____

Please indicate who is responsible for your student's tuition payments: Mother Father
 Grandparent/Guardian OtherAddress **if different** from student _____

Child's Dentist _____ Phone ()

Child's Physician _____ Phone ()

Physical problems/allergies, if any _____

Has your child attended a Previous Day Care or Pre-school: yes no If yes, please list name & location.

Name of Facility _____ City _____ State _____

Has your child ever been rejected or dismissed from a Day Care or Pre-school? yes no If yes, please state reason.**Indicate class and days attending****5 days a week:** Kindergarten 1st grade 2nd grade 3rd grade 4th grade 5th grade 6th grade 7th grade**2-4 year olds:** 9:00 a.m.-3:00 p.m. **1 year olds:** 8:15 a.m.-3:45 p.m.**Circle Days:** Mon. Tues. Wed. Thu. Fri. **# of Days Per Week:** 1 2 3 4 5**(over, please)**

Emergency Contacts - DLCS will contact in order listed below for illness or emergency

Name _____ Relationship _____ Phone () _____

Address _____
Street City State ZIP

Name _____ Relationship _____ Phone () _____

Address _____
Street City State ZIP

Name _____ Relationship _____ Phone () _____

Address _____
Street City State ZIP

Name _____ Relationship _____ Phone () _____

Address _____
Street City State ZIP

Reason for selecting Dynamic Life Christian School _____

Dynamic Life Christian School was recommended by _____

Has your child ever been a student at Dynamic Life Christian School? Yes No

STATEMENT OF COOPERATION

In making application for my child, I desire to have him/her complete the _____ - _____ school year at Dynamic Life Christian School. It is also my understanding that the policy of the school is to make no refunds or transfers on registration, book, or supply fees. I understand that Dynamic Life Christian School is a private institution; DLCS reserves the right to set and maintain its own standards for student conduct, dress code, and tuition assistance. These standards include conduct while on school and off school premises. I further agree to indemnify and hold Dynamic Life Christian School harmless for any and all liability that may result from my child attending or participating in all activities of Dynamic Life Christian School.

Date _____ Parent's Signature _____

Note: *If your child does not start school on the scheduled start date and you have **not** notified Dynamic Life Christian School, we will assume that your child will not be attending and your child's space will be made available for another child. All paid fees will be forfeited.*

Items to be submitted with this form:

- Fees or deferred agreement
- Tuition
- Health/Immunization Form
- Public Disclosure Form
- Photo Release Form
- Medical Release Form
- Tuition Express Forms/My Procure
- Custody or Other Legal Forms
- Proof of identity and age (to be initialed by School Official when seen)
- _____ Certified copy of birth certificate
- _____ Notification of birth (hospital, physician, or midwife)
- _____ Baptismal record
- _____ School record from public school in VA, **or**
- _____ Certification by principal, or his designee, of a public school in the U.S., that a certified copy of the child's birth record was previously presented

DYNAMIC LIFE CHRISTIAN SCHOOL
 1600 John Marshall Highway, Front Royal, VA 22630
 (540) 636-9595
ENROLLMENT CONTRACT

Family Name _____

Primary Emergency Contact (available while child is at school) _____

Cell _____ Work _____

Email _____ Home _____

Name (List eldest student first)	Circle Day(s) of Week Attending	Circle Time of Drop Off	Circle Time of Pick Up
Child 1 _____	M Tu W Th F	7:30 - 8:45	3:00 - 3:15
Child 2 _____	M Tu W Th F	Additional Charge for Drop Off before 8:45 am	Additional Charge for Pick Up after 3:15 pm
Child 3 _____	M Tu W Th F	8:45 - 9:00 9:00 - 9:30	3:15 - 4:00 4:00 - 5:00 5:00 - 5:30

(Initials) **Parent Agreement:**

- 1. In order to secure enrollment, I, as the parent/guardian, agree to pay and deliver with this Enrollment Contract the non-refundable enrollment fees and the first week's tuition.
- 2. I hereby agree to pay the weekly tuition amount shown on this contract for the Fall 2026-2027 program. DLCS reserves the right to deny admission if payments are not made by Monday at 12 noon. I understand that any additional fees such as meals, before/after care, or other miscellaneous charges will be billed to my account. School records, tax reports, and final report cards will not be released until all outstanding balances have been rectified.
- 3. Due to fixed costs averaged over the entire year, **there is no reduction in tuition for days missed for any reason**, such as sick days, family vacations, school holidays, etc.
- 4. If DLCS attempts to process an automatic tuition payment or deposit a check payment and the account has Non-Sufficient Funds, a NSF charge of \$15 and a late charge of \$25 will be added to said account.
- 5. If a student is diagnosed with a learning disability that can not be managed in a regular classroom or setting without additional staff, by the advice of a physician or a licensed clinical professional, the parent/guardian will be given the option to cancel the contract or to fully provide all necessary funds to educate the child (e.g. tutor, classroom aide, materials, etc.) This amount will be determined on an individual need and presented by school administration to the contract holder.
- 6. Early withdrawal policy: This is a **CONTRACT** between students' parents/guardians and DLCS. DLCS commits to operating expenses for the school year based on enrollment. Therefore, students may not be withdrawn before the final session day unless released by the Director. Withdrawal from the school must be made in writing through the Director's Office and will result in a \$500 early termination fee.
- 7. I understand that my child needs to remain home for at least 24 hours without symptoms or symptom relieving medication before returning to DLCS, unless the school receives a note from the child's medical provider stating that the child is not contagious and may return to the school. In the case of a (suspected) contagious disease, rash, or continuing symptoms, a note from the child's medical provider will be required before the child can return.
- 8. I have read and will abide by school policies as stated in the DLCS Student Handbook.

Parent Signature: _____

DYNAMIC LIFE CHRISTIAN SCHOOL
 1600 John Marshall Highway, Front Royal, VA 22630
 (540) 636-9595
ENROLLMENT CONTRACT Page 2

Parent Name _____

Billing Address _____

City _____ State _____ Zip _____

Email _____ Home Phone _____

Name (List eldest student first)	Circle Day(s) of Week Attending	Age	Enrollment Fees	Weekly Tuition
Child 1 _____	M Tu W Th F _____	_____	\$ _____	\$ _____
Child 2 _____	M Tu W Th F _____	_____	\$ _____	\$ _____
Child 3 _____	M Tu W Th F _____	_____	\$ _____	\$ _____
Start Date _____			Totals \$ _____	\$ _____

If Previously Enrolled:

I have reviewed my contact information and no changes need to be made at this time. I know my information can be updated any time at www.myprocare.com. All permissions and releases still apply.

Parent Signature: _____

Date of Signature: _____

Non-refundable fees due upon registration:

Enrollment Fees include the cost of registration, books, supplies, and technology.

This fee is paid annually at the beginning of each new school year. Additional fees apply for Summer Adventure.

New Student Registration fee all classes.....	\$100.00
Re - Registration fee all classes.....	\$50.00
Supply and Curriculum fee for 1 year old, 2 year old, and 3 year old classes.....	\$400.00
Supply fee for Pre K and Kindergarten.	\$400.00
Curriculum fee for Pre K and Kindergarten.	\$250.00
Supply fee for 1st through 7th grade.	\$250.00
Curriculum fee for 1st through 7th grade.	\$500.00
Elective fee for 1st through 7th grade.....	\$250.00

Tuition:

Nursery - 8:15 a.m. - 3:45 p.m.

5 days a week \$280.00 wk

2 year old Preschool - 9:00 a.m. - 3:00 p.m.

2 days a week (T/Th only) \$107.00 wk
 3 days a week (M/W/F only) \$149.00 wk
 5 days a week \$188.00 wk

Preschool ages 3 and 4 year olds - 9:00 a.m. - 3:00 p.m.

2 days a week (T/Th only) \$100.00 wk
 3 days a week (M/W/F only) \$135.00 wk
 5 days a week \$171.00 wk

Additional Charges for ages 3 and 4:

Potty Training Fee (if not completely potty trained).....\$5.00/day

Elementary - 5 days a week, 8:45 a.m. - 3:15 p.m.

Kindergarten thru 7th \$179.00 wk \$7160 yr

DLCS Before and After Care - starts at 7:30 a.m., ends at 5:30 p.m.

2 days a week.....	\$44.00
3 days a week.	\$63.00
5 days a week.	\$80.00

Tuition & Fees Worksheet:	
Enrollment Fees Total from above	\$ _____
Tuition Total from above	\$ _____
Potty Fee	\$ _____
Discount or Coupon	\$ < >
Total Amount Due	\$ _____



Dynamic Life Christian School

Emergency Medical Release

This form will be on file in the school office for the current school year.

In case of accident or other emergency involving my child _____, whose birthday is _____, I/we request that the school contact me/us. If the school cannot reach a parent/guardian after conscientious effort, I/we give permission for school staff to call paramedics or any licensed physician or dentist. If a life-threatening emergency exists, I/we give permission for school staff to call paramedics immediately and then contact me/us as soon as possible thereafter.

I/we authorize and consent to any x-ray examination, anesthetic, medical, dental, or surgical diagnosis or treatment and hospital care, which in the best judgment of a licensed physician or dentist is deemed advisable. I/we agree to assume the financial responsibility for expenses incurred as a result of those services being provided. I/we also agree to be financially responsible for emergency medical transportation.

Father/Guardian Signature

Mother/Guardian Signature

Father/Guardian Printed

Mother/Guardian Printed

Date

Date

Both parents of the student must sign. If parents with joint custody of the child live in separate homes, both parents are required to sign the form.

Please notify the school office of any changes during the school year.

Dynamic Life Christian School
1600 John Marshall Highway
Front Royal, VA 22630
(540) 636-9595

Photo/Video Release Form

I hereby give permission for images of my child, captured during regular and special school activities through video, photo and digital camera, to be used solely for the purposes of Dynamic Life Christian School promotional materials and publication and waive any rights of compensation or ownership thereto.

Name of participant (*please print*) _____

Name of parent/guardian (*please print*) _____

Parent/guardian's signature _____

Date _____

Dynamic Life Christian School

**1600 John Marshall Highway
Front Royal, VA 22630
(540) 636-9595**

PUBLIC DISCLOSURE STATEMENT Exempt Child Day Centers

The code of Virginia, Section 22.1-289.031 allows child day centers operated by religious institutions the opportunity to file for an exemption from licensure by meeting documentation and other requirements specified within the religious exemption law. The statements below have been prepared and distributed to meet the requirements of the exemption law.

Religious Exemption

In compliance with the Code of Virginia, Section 22.1-289.031, this school is religiously exempt from licensure and is classified as a “religiously exempt” child day center.

Qualifications of Personnel

Criminal background check
Health assessment
First aid and CPR training
Staff training

Description of Facilities

The name of the school is called Dynamic Life Christian School.
The school is located at 1600 John Marshall Highway, Front Royal, VA 22630.
The size of the building is 18,000 square feet.
The number of rooms used for the school is eleven classrooms and main hall.
The kitchen facilities are available for use by the school.

The play equipment consists of indoor and outdoor sports equipment, commercial moon bounces, hula hoops, and more.

Other Significant Features of the Facilities

Trackless train

Enrollment Capacity

The maximum number of children that the school will enroll is 150. The maximum number of children to be in care at any one time is 120 people. The maximum number of people to be in the building at any one time (as dictated by the local building inspector) is 300+.

Food Service

The school intends to provide food service. We will prepare hot lunch and afternoon snack for purchase.

Health Requirements for Staff

Staff employed at the school MUST be certified by a practicing physician to be free from any disability that would prevent them from caring for children. Documentation is on file at the School.

Public Liability Insurance

The school is covered by public liability insurance that provides coverage in the event someone brings suit for personal or bodily harm suffered during the operation of the school as a result of negligence.

Christian School

Dynamic Life Christian School is a Christian school that teaches Christian principles and standards to its staff and clientele. These principles and standards are biblically based, using both Old and New Testaments. The Dynamic Life Christian School is a ministry of the church universal; however, Dynamic Life Praise and Worship Center is our sponsoring church. Our doctrinal statements and positions on theological topics can be found with them.

I _____ have read the above information
(Print name of parent)

Signature of parent _____ Date _____

Name of student _____

Automated Payment Processing



Safe. Convenient. Easy.

We are excited to offer the safety, convenience and ease of Tuition ExpressSM—a payment processing system that allows secure, on-time tuition and fee payments to be made from either your bank account or credit card.

ELECTRONIC FUNDS TRANSFER AUTHORIZATION FOR **BANK ACCOUNT AND CREDIT CARD**

I (we) hereby authorize (business name) _____ to initiate credit card charges to the below-referenced credit card account (Section A) OR, initiate debit entries to my (our) checking or savings account, indicated below (Section B). To properly affect the cancellation of this agreement, I (we) are required to give 10 days written notice. Credit union members: please contact your credit union to verify account and routing numbers for automatic payments. Check with the center for accepted credit card types.

COMPLETE ONE SECTION ONLY

SECTION A (Credit Card)

Cardholder Name	Phone #		
Cardholder Address	City	State	Zip
Account Number	Expiration Date		
Cardholder Signature	Date		

SECTION B (Bank Account)

Your Name	Phone #			
Address	City	State	Zip	
Bank or Credit Union Name	Bank or Credit Union Address	City	State	Zip
Routing Transit Number (see sample below)	Account Number (see sample below)	<input type="checkbox"/> Checking	<input type="checkbox"/> Savings	
Authorized Signature	Date			



ROUTING NUMBER

ACCOUNT NUMBER

CHECK NUMBER

FOR OFFICIAL USE ONLY

Date Received
Employee Signature

800.338.3884 • procuresoftware.com

© Copyright 2010 Procure SoftwareSM, LLC

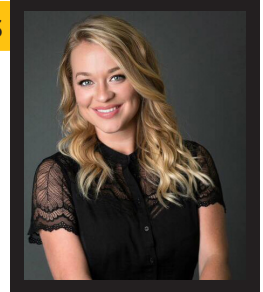


Why Families are Choosing **Dynamic Life Christian School** for Their Child's Preschool and Private School Education...



Our Director, Mrs. Amber Jones

- M.ED in Administration & Supervision
- Bachelors degree in Elementary & Middle-school Education
- Bachelors in Special Education K-12
- 11 years experience in public schools



Our Executive Director, Mrs. Elvi Rogers

- Graduate of George Mason University
- Degree in Early Education
- Licensed with the state of VA for 20 years
- 10 years experience in public schools
- 19 years experience as Preschool Director/Elementary School Principal



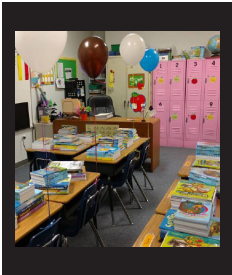
Our Staff

- Professional, Trained
- Friendly and love working with children
- Complete Criminal Background Check/Health Screening
- Ongoing staff training
- Regular formal & informal teacher evaluations



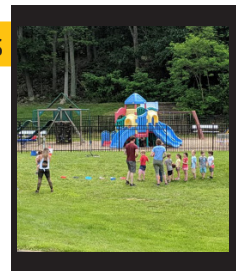
Our Facility

- Spacious Classrooms
- Clean and Sanitary
- Commercial Kitchen and Large Cafeteria; Serve meals daily
- Indoor Play Area with Moon Bounces, slide, hula hoops and more



Our Grounds

- Large Pavilion
- Large Fenced In Playground and Outdoor Fields
- Outdoor Play Equipment (parachutes, oversized balls, scooters, etc.)
- Trackless Train



Our Program

- Abeka Curriculum
- Before and After School Care available
- Flexible scheduling
- Small class sizes
- Homeschool Enrichment Program



Our Safety

- Only one entrance into facility, all other doors locked
- Surveillance cameras monitor grounds
- Electronic daily communication and check in system
- Key code doors on all classrooms

